

# Advisor

**Salsco, INC.**  
LEADER BY DESIGN

Over 40 Years of Quality & Service

Products for Golf Course Maintenance, Turf & Lawn care, Rental, Construction,  
Tree Care, Wood Processing, Nursery & Farm Industries | September 2020

 **MADE IN  
THE U.S.A.**  
MAKING AMERICA GREAT AGAIN  
ONE MACHINE AT A TIME!

## Sal's Corner

**2020, WOW what a year  
this has been so far:**

- Country lock down
- Trade shows canceled
- Salespeople told to stay home

**2020, Good News!**

- Virus curves seem to be flattening.
- Election is getting closer and soon will be History.
- I am very optimistic that fall and last quarter will be fantastic.
- **2021 GREAT**, Virus on the run, Election over!

## Video of Model 525 Strawblower

**Model 525 Strawblower processes 3.3 bales of straw per minute!**

The swivel turret will make roadside work and large areas easy to do. With simple 360° rotation, and full travel from negative 45° to positive 45° you can reach virtually everywhere! A heavy duty tubular, steel frame is fully gusseted where necessary for strength. Adjustable height hitch and Torflex axle for smooth over-the-road travel, is standard equipment.

For more information about our Model 525 (skid mount) / Model 525T (trailer) Strawblower, visit these links: [STRAWBLOWER HOMEPAGE](#); [LITERATURE AND SPECIFICATIONS](#)



## CRV, Core Recovery Vehicle



### LABOR SAVING, DUAL PURPOSE MACHINE!

**Picks Up Cores!** Two elevators with floating guide blades float over undulations with ease, while the CRV cleans a 72" swath of cores that empty into the waste container.

**Converts to a 72" Wide Roller!** The elevators, waste container, and waste conveyor can be removed in under an hour, and the CRV becomes a 72" roller. Three floating rolls and 100% drive to all rolls easily allows the CRV to roll the most challenging surfaces.

**We encourage you to share our CRV videos on social media ...**

Click [HERE](#) for a video of the CRV. Click [HERE](#) for a fast pitch video of the features, benefits, and patented design of the CRV.

## Welcome Redexim Turf!

Salsco @salscoinc · 21h

Welcome Aboard Redexim Turf Products, MO. The Salsco team looks forward to working with your company to provide quality products & service to your customers in Eastern Missouri. #Salsco [salsco.com](#)

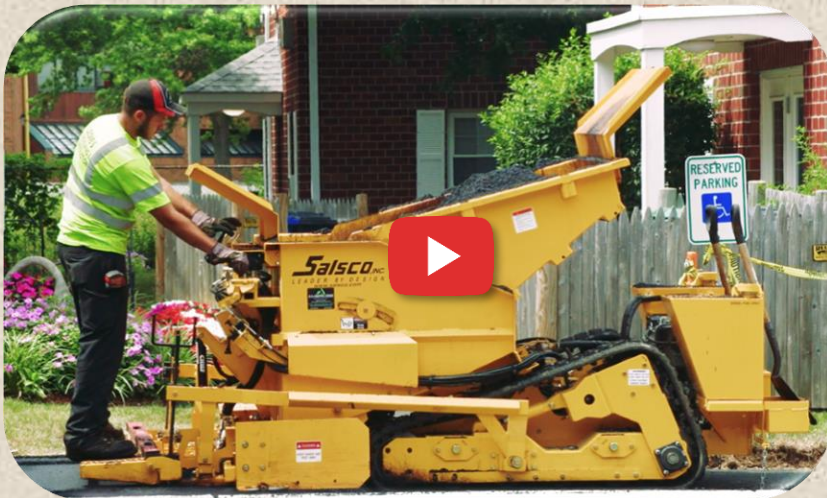
RedeximTurfProducts @RedeximTurfProd · Aug 4

RTP is proud to announce we are now a Salsco Dealer for Eastern Missouri and Southern Illinois. If you want like to know if you are in our Territory, Call us at 636-825-8300 or contact us at [RedeximTurfProducts.com](#). #Redexim #RTP #Salsco @salscoinc





# Video of TP44-TD Mini Asphalt Track Paver



We would like to share a **Video** of our TP44-TD Mini Asphalt Track Paver paving a residential sidewalk near Boston. This machine was designed for close quarters, yet it can easily be adjusted to pave larger widths ... anything from 6 inches to 7 feet with optional screed extensions.

See for yourself this difficult job made easy with the versatility of the TP44-TD paving tight corners, its free-floating screed design, and the convenient, easy-to-use controls.

Click **HERE** for how to operate the TP44-TD paver.

*Special thanks to Leone's Landscaping & Construction for allowing us to shoot the video!*

Paving and Curbing Equipment homepage: [www.salsco.com/products/paving-and-curb-ing-equipment.html](http://www.salsco.com/products/paving-and-curb-ing-equipment.html)

## HYDRAULIC CONVEYER BELT FOR SALE

The Salsco Conveyor Belt is 18" wide by 14' long. Great for cement or sand. Click photo for video. \$11,000 or best offer. Call 1-800-872-5726 for any questions and ask for Jack or Sal.

## USED SALSCO EQUIPMENT

If you are looking for or trying to sell used Salsco Equipment, we will be glad to put your ad on our Used Equipment page for a period of 30 days. Just email the machine specifics, the price you are asking or willing to pay, and your contact information to [s.clark@salsco.com](mailto:s.clark@salsco.com). Photos of used equipment can also be submitted.



## See You in 2021!

**2020** is a year like no other, the year that was canceled, the year to stay safe, and a learning experience for all of us. Salsco remained open, safe, productive, and optimistic that we will be back in full force very soon. A substantial amount of our business is generated via trade shows and like most companies, we were considerably affected by the COVID-19 outbreak. Nine major shows were canceled, and we missed the enthusiasm of showing our machines to prospective customers. The Salsco Team looks forward to seeing you in 2021!

**2020 TRADE SHOWS CANCELLED DUE TO COVID-19** • FOR UPDATES VISIT: [www.salsco.com/trade-shows.html](http://www.salsco.com/trade-shows.html)

**AG PROGRESS DAYS:** August 11-13

**WOODSMEN'S FIELD DAYS:** August 21-23

**PWX EXPO:** August 30-September 1

**GREAT LAKES LOGGING:** September 10-12

**PAUL BUNYAN SHOW:** October 2-4

**RICHMOND EXPO:** October 9-10

**SUNBELT AG EXPO:** October 20-22

**CAROLINAS GOLF COURSE SUPERINTENDENTS:** November 17-18

**NJ GREEN EXPO:** December 8-9

We have always appreciated your feedback in traditional ways. Now with social media, you can share your experiences with us!

