

# CRV Core Recovery Vehicle

**Salsco, INC.**  
LEADER BY DESIGN



**MADE IN  
THE U.S.A.**



CRV is a dual purpose machine, when it isn't picking up cores the conveyors can be removed in under one hour. With the conveyors removed the CRV becomes a 72" wide roller for all sports turf. The floating rolls and 100% drive to all rolls allows this 2 in 1 machine to roll the most challenging surfaces.



## Great for all Types of Turf Football, Soccer, Rugby, Golf, Etc.

Two elevators with floating guide blades clean and guide 72" of cores to the elevators. Floating guide blades float over undulations with ease while guiding cores to lifting point. Two lift elevators carry the cores to the waste conveyor. The Waste Conveyor can either be emptied into awaiting waste cart or dumped on the fly into the waste cart.

**Trailer Options:** Over the road trailer and off road trailer. Self-Locking easy to load tilt trailers with rubber strips on the wooden deck is quickly loaded for transport. Safety steps and handle bar provide easy access to the drivers seat.



Guide Blades



Off The Road Trailer.



Waste Conveyor

Elevators

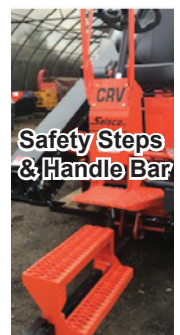
Waste Container



Over The Road Trailer.



Locking Mechanism



Safety Steps & Handle Bar

*Quality of Workmanship, Innovative Design, Built to Last!*

**Salsco, INC.**  
LEADER BY DESIGN

<b>Specifications - CRV, Core Recovery Vehicle</b>	
<b>WARRANTY:</b>	5 - Year Limited Warranty.
<b>ENGINE:</b>	24HP Honda electric start, air cooled, rubber mounted to reduce vibration.
<b>FUEL TANKS:</b>	Two (2), 6 gallon CARB approved fuel tanks.
<b>CONTROLS:</b>	On/Off switch, choke, throttle.
<b>HOURLY METER:</b>	Standard.
<b>BATTERY:</b>	12 volt, 650CCA.
<b>SEAT:</b>	Arm rest seat, black vinyl, forward/reverse slide adjustment.
<b>STEERING SYSTEM:</b>	All three (3) roll housings articulate at different degrees of travel, which allows turning without bruising.
<b>STEERING WHEEL:</b>	13-1/4" diameter, automotive type, hydraulic steering wheel.
<b>MAIN FRAME:</b>	2-1/2" x 2-1/2" x 1/4" steel square tube. Fully gusseted and continuous welds.
<b>ROLLS:</b>	Three (3) oscillating steel rollers, driven for positive traction. One (1) 10-3/4" diameter x 36" long, Two (2) 10-3/4" diameter x 24" long with beveled ends. All rolls machined to within two thousandths of an inch concentricity. Rotary brush system is standard.
<b>TRACTION DRIVE:</b>	Hydraulic pump to three (3) hydrostats, 1 to each roll. Chain drive from hydraulic motors to rolls. #50 chain & sprockets.
<b>CLIMBING TRACTION:</b>	Varies, depending on conditions. Do not exceed 15°.
<b>BRAKES:</b>	Hydrostatic.
<b>HYDRAULIC COMPONENTS:</b>	<b>Hoses:</b> SAE JIC hose ends & fittings. 3,000 P.S.I. working & 12,000 P.S.I. burst. <b>Motors:</b> Six (6) hydrostatic motors. <b>Pump:</b> One (1) dual tandem variable speed hydrostatic pump with three (3) auxiliary pumps.
<b>ROLLING SWATH:</b>	72".
<b>SPEED:</b>	Variable, 0 – 11.
<b>CONVEYOR/ELEVATOR SYSTEM:</b>	<b>Elevators:</b> Two (2) elevators with floating guide blades that float over undulations and guide the bars to the elevators where paddles on a conveyor align and ride over UHMW (Ultra-High-Molecular-Weight Polyethylene) and lifts the waste to the holding container. <b>Waste conveyor:</b> One (1) pivoting aluminum 3003 conveyor from the holding container, with a continuous rubber belt.
<b>WASTE CONTAINER:</b>	Aluminum 3003.
<b>TRANSPORT TRAILER OPTIONS:</b>	Two (2). Both are slow tilt, self locking wooden deck trailers with access step & rubber strips. One is equipped for transport off the road and one is equipped for transport over the road.
<b>GUARDS/DECALS:</b>	All moving parts guarded. Full set of safety decals.
<b>PAINT:</b>	Orange, polyester powder coat paint provides excellent outdoor weatherability and offers protection against ultraviolet discoloration. All parts painted separately.
<b>CRV DIMENSIONS:</b>	Length: 9'4" Width: 7' Height: 9'4" Weight: 2,780 lbs.
<b>TRAILER DIMENSIONS:</b>	Length: 15'10" Width: 8' Weight: 540 lbs.

Specifications & Options Subject to Change Without Notice

Rev. 9/28/2020

## MANUFACTURER OF OUTDOOR POWER EQUIPMENT

Products for Turf & Lawn care, Rental, Construction, Tree Care, Wood Processing, Nursery & Farm Industries

**3-1/2" - 18" Capacity, Gas, Diesel, & PTO Wood/Brush Chippers - Slab Chippers  
Gas, Electric & Tow Behind Rollers - Tranz-Former Roller - CRV Core Recovery Vehicle  
Mini-Paver - Mini-Track Paver - Cobra Curbers - Scorpion Router - Concrete Paver  
Chipper Shredder Vacuums - Tailgate & Truckloader Vacuums  
9 cu. yds. - 50 cu. yds. Per Hour, Electric, PTO & Diesel Powered Shaving Mills**

**Salsco, INC.**  
LEADER BY DESIGN

105 Schoolhouse Road  
Cheshire, CT 06410 U.S.A.  
800-872-5726 (Toll Free), 203-271-1682, 203-271-2596 (Fax)  
[www.salsco.com](http://www.salsco.com), [sales@salsco.com](mailto:sales@salsco.com)